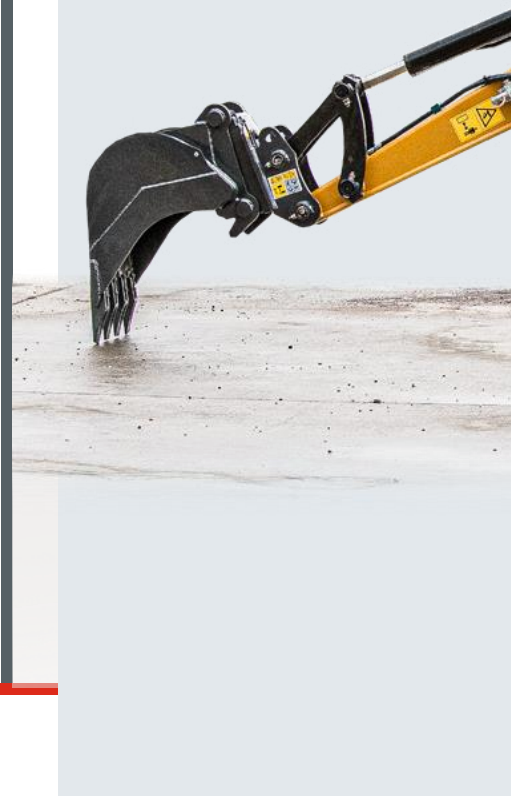


# SANY



## A POWERFUL LIGHTWEIGHT

COMPACT FLEXIBLE VERSATILE  
CONSTRUCTION MACHINERY

## SY18U



# SANY

## For challenging tasks, you need a first-class partner

Quality comes from experience. And from new ideas. This is why we combine these two crucial factors at SANY. This is because we are one of the world's leading producers, having sold more than 320 000 excavators in 10 years. This means that you can always rely on sophisticated products that have been tried and tested in practice. An impressive 5-7 % of our annual turnover is dedicated to research and development.

**320 000**  
EXCAVATORS SOLD IN  
**10 YEARS**

**5- 7%**  
TURNOVER FOR RESEARCH  
AND DEVELOPMENT

Quality Changes the World



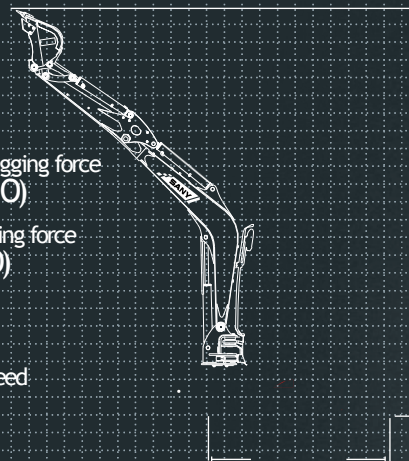
## SY18U HARD FACTS

Max. bucket digging force  
16.6 kN (ISO)

Max. arm digging force  
9.2 kN (ISO)

Swingspeed  
10 rpm

Max. travel speed  
3.8 km/h



# TOP PROPERTIES

ECONOMY

## LESS IS MORE - AT LEAST IN TERMS OF OPERATING COSTS

The SY18U pays for itself. A versatile workhorse, it is a future-proof investment in performance, reliability and productivity. With a complete package of comprehensive technology, developed for maximum profitability.



ECONOMY

### Efficiency or performance? Why should you have to choose?

The times when you had to pay for high performance with extremely high operating costs are over. The SY18U combines exemplary cost-effectiveness and performance. It's designed for extremely low fuel consumption in compliance with the strict emission standard 5.



### QUALITY

**Robust and durable** - the most important protective elements and reinforcements as well as all access panels parts are made of high-quality metal, ideal for tough use in the construction industry.



### SAFETY

**No compromise** - the SY18U is fully equipped for precise, safe working even under extreme application conditions - No compromise when it comes to safety.

### High Power Engine

Equipped with Yanmar imported engine, 3TNV80F, exclusively for SANY. It has enough power, 14.6kw, which ensures the reliability of the machine in bad working conditions.

### USER EXPERIENCE

**Extremely comfortable** - from easy access to the comfortable seat and the ergonomically designed controls, the driver can look forward to maximum comfort.



### Premium Suspension Seat

Equipped with suspension seat to improve comfort.

### Extension-type Undercarriage

The adjustable width of the undercarriage is 980-1350mm. While improving the stability of the whole machine, the excavator can pass the working space of less than 1m. Rotary shovel can ensure the passability and improve the working efficiency.



# EFFICIENCY, COST-EFFECTIVENESS AND USER EXPERIENCE



## USER EXPERIENCE

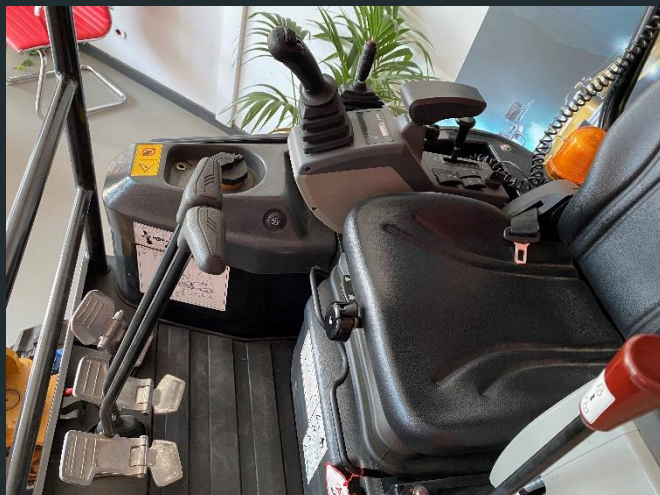
### Maintenance and servicing made easy

Carry out maintenance and inspections quickly and reliably - no problem with SANY's sophisticated service concept, where each part can be maintained from ground level. The generously sized bonnets ensure quick and easy access to all maintenance-related components.

## USER EXPERIENCE

# FOCUS ON DRIVER COMFORT

The generously designed body offers operating comfort geared to practical use. For many people, it is the most important component: The comfortable driver's seat. The armrests can be adapted to any body size because they can be easily adjusted in height and thus make fatigue-free working possible. Ergonomically arranged controls round off the overall package.



## USER EXPERIENCE

### Operator comfort is key

Extremely comfortable - from easy access to the comfortable seat and the ergonomically designed controls, drivers can look forward to maximum comfort.



## Our highlights - the added benefits SANY offers you:

- + Comfortable seat
- + LED work lighting
- + Canopy
- + Load-sensing hydraulic system
- + Emission standard 5

### SAFETY

## What is important must be protected

Safety for people and machines is ensured here not only by warning devices such as the standard rotating warning beacon and the travel alarm. The boom cylinder is also protected, which prevents major damage to the cylinder.



### DIMENSIONS

## Perfect stability - in every situation

The track width of 750-1120 mm, the low centre of gravity and the well thought-out weight distribution give the SY18U first-class stability - even when working at maximum horizontal reach and in extreme conditions. The setting of the new SY18U foresees the hydraulically expandable carriage from 980 up to 1.350 mm. A stable support base to work safely in any operational context.



### ECONOMY

## Little things make all the difference - open to everything

For a full view, the SY18U offers a perfect view outside of the work area - naturally in compliance with the current ROPS specifications.



# SY18U

**PESO OPERATIVO 1.925 kg**

## MOTORE

- Modello : Yanmar 3TNV80F
- Tipo : Motore diesel 3 cilindri raffreddato ad acqua
- Emissioni : Stage V
- Potenza nominale : 14,6 kW / 2.400 giri/min
- Coppia max : 64,7 Nm / 1.800 giri/min
- Cilindrata : 1.267 cc

## SISTEMA IDRAULICO

- Pompa principale : Pompa portata variabile
- Portata max : 72 l/min
- Motore di traslazione : Motore a pistoni assiali variabile
- Motore di rotazione : Motori pistoni assiale
- Portata max (AUX1) : 40 l/min

## SERBATOI

- Gasolio : 20 l
- Liquido raffreddamento motore : 4,1 l
- Olio motore : 2,5l
- Impianto idraulico : 26 l
- Serbatoio idraulico : 21 l

## PRESTAZIONI

- Velocità di rotazione : 10 giri/min
- Velocità di marcia : 3,8 km/h / 3 km/h
- Forza max di trazione : 15,6 kN
- Capacità benna standard : 0,04 mc
- Pendenza max : 30°
- Forza di scavo alla benna ISO : 16,6 kN
- Forza di scavo al bilanciere ISO : 9,2 kN

## DIMENSIONI TRASPORTO

- Lunghezza trasporto : 3.515 mm
- Larghezza trasporto : 980 ~ 1350 mm
- Larghezza parte superiore cabina : 980 mm
- Altezza totale (escluso girofaro) : 2.370 mm
- Larghezza sottocarro : 980 ~ 1.350 mm
- Lunghezza cingoli : 1.580 mm
- Altezza della lama : 270 mm
- Larghezza dei cingoli : 230 mm
- Raggio di rotazione : 675 mm
- Lunghezza boom : 1.770 mm
- Lunghezza del braccio : 1.160 mm
- Numero rulli inferiori : 3

## AREA DI LAVORO

- Sbraccio max a livello del terreno : 4.135 mm
- Profondità max di scavo : 2.585 mm
- Altezza max di scavo : 3.530 mm
- Altezza max di carico : 2.545 mm

## The SY18U - already well equipped with high-quality features as standard

Productive and concentrated work is only possible with the right equipment. The SY18U leaves practically nothing to be desired here.



### OPERATORS COMFORT

Armrests (adjustable)	•
12v outlets	•
AUX 1 on Joystick	•
8 stored hydraulic settings for attachments	•

### SAFETY

Battery master switch	•
Beaconlamp	•

### WORKING EQUIPMENT

Boom and arm load holding valves with overload indicator	•
Double acting circuit for hydraulic quick coupler with piping	•
Hammer & Shear line proportional on Joystick with piping	•
Flow adjustment for attachments	•
Dozer blade	•
Cylinder guards - boom	•

Standard equipment • Special option •

### WORKING LIGHTS

Lights front (LED)	•
Lights - boom (LED)	•

### UNDERCARRIAGE

Rubber tracks	•
Steel tracks	•
Cylinder guards - dozer blade	•
Holes/loops for fixing	•

### ENGINE

Auto idle	•
Diesel filter	•
Dehydr. For fuelsystem	•

### HYDRAULIC SYSTEM

Swing brake	•
2 speed travel	•
Hydr. Pre-pressure operating joysticks	•
Mainfilter	•

The standard and special options differ depending on the country in which the mini excavator is delivered. If you have any questions, please contact your dealer directly.

## Parts supply - quick and reliable

With the purchase of a SANY mini excavator you have made an investment in the future. Fast availability of spare parts is your guarantee of minimal downtimes and failure times.





# A SERVICE YOU CAN RELY ON

Just as we do with our excavators, we also demand high quality and reliability of our service products. This underlines our equipment's performance in terms of their durability and their excellent price-performance ratio. After all, maintenance is crucial

for efficiency, cost-effectiveness and safety. Your SANY dealer is happy to help you with a comprehensive range of services to ensure that your machine continues operating efficiently in the long term.



## The added benefits SANY offers you:

- + Experienced dealer network throughout Italy
- + Dedicated SANY team based in the Italy to support you and your product
- + Italy office and parts warehouse to ensure SANY excavators are fully supported

# SANY

Quality Changes the World

SANY ITALIA SRL  
 Via Druento 254/B, 10078  
 Venaria Reale (TO)  
 Telefono +39 011 800 2130  
 info@sanygroup.com  
 www.sanyitalia.com

